

Mounted Exterior Keypad (DC-5200 - 300MHz) (DC-5202 - 310MHz)

Features

The Mounted Exterior Keypad is a battery-operated device that will operate a Digi-Code Receiver or a Stanley garage door opener using a four-digit **PIN (Personal Identification Number)**. Pressing four preprogrammed numbers on the keypad sends a radio signal to the receiver or door opener that controls the garage door or gate operator. See Figure 1.

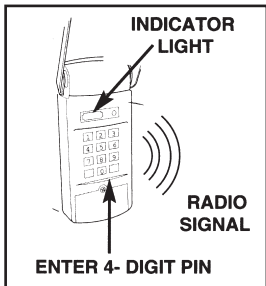


Figure 1

Pressing any key will light the keypad.

The keypad works with both Digi-Code Receivers (DC-5200 & DC-5202) and Stanley **Secure Code** and **Digital** type door openers.(DC-5202 ONLY)

The keypad will store the last **PIN** entered in its memory, even if the battery is removed.

Pressing any key within 30 seconds after the door has been activated will activate the door again.

⚠ WARNINGS

- Mount the keypad **OUT OF THE REACH OF CHILDREN** at least five feet above the ground.
- NEVER allow children to operate the keypad.
- Disconnect power from the door opener before installation.
- Wear safety glasses to protect your eyes during installation.

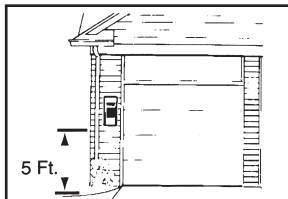


Figure 2

Section 1: General Installation of Your Exterior Keypad

Tools Required:

- Drill with 1/8" bit
- Flathead screwdriver
- Pencil
- Measuring tape

1. Choose a location that will not interfere with the normal operation of the door or gate. See Figure 2.
2. Hold the keypad at the selected location. Using your pencil, mark the wall at the center on the top of the unit.
3. Drill a 1/8" hole 3/4" directly below this mark. See Figure 3.
4. Tighten a screw in the hole until the head is sticking out about 1/16".
5. Hang the unit on the screw. Adjust screw as required for a snug fit.
6. Remove the battery cover to expose the second screw hole. See Figure 4.
7. Mark the position of the second screw with the pencil through the screw hole.
8. Drill another 1/8" hole for the second screw.
9. Tighten the second screw in the hole.
10. Install the battery and replace the battery cover.

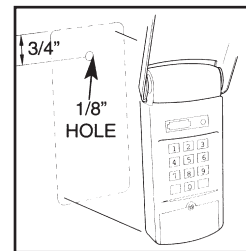


Figure 3

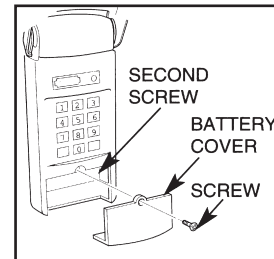


Figure 4

Section 2: Identifying Your Type of Stanley Door Opener (Model DC-5202 Only)

Before programming the keypad, it is necessary to identify the type of door opener installed.

- SecureCode openers have a LEARN or REMOTE "R" button on the back of the unit. It will look like either one of the drawings in Figure 5.
- Digital openers have toggle switches, jumper wires or rocker switches. See Figure 6.

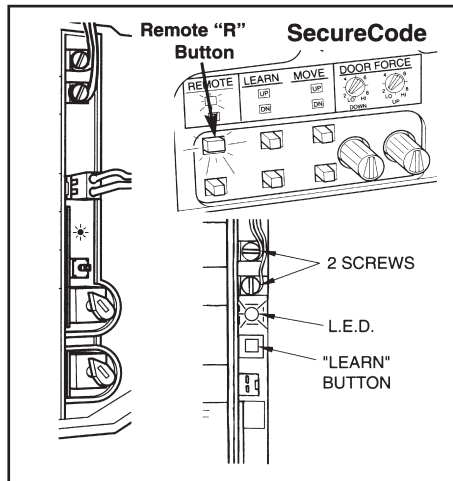


Figure 5

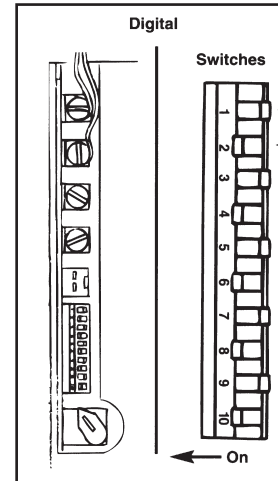


Figure 6

After Identifying your opener type, find the section that will help you program your Exterior Keypad:

- Section 3: Programming to a Stanley SecureCode Garage Door Opener
- Section 4: Programming a Digi-Code Receiver or Stanley Digital Garage Door Opener.
- Section 5: Programming A New Personal Identification Number (PIN)
- Section 6: Clear All Memory - Return to Factory Default Setting

Section 3: Programming to a Stanley

Secure Code Garage Door Opener. (Model DC-5202 ONLY)

1. Press the Learn or Remote “R” button on the back of the garage door opener. The opener will turn on its lights.
2. Enter the factory set PIN on the keypad (Numbers 1-2-3 and 4). If you enter the proper PIN within 30 seconds of putting the opener in learn mode, the garage door opener lights should blink, signalling that it has learned the code of the remote keypad.
3. When the keypad lights go out, enter the PIN again. The opener should activate.

Section 4: Programming to a Digi-Code Receiver (Models DC-5200 & DC-5202) or a Stanley Digital type Garage Door Opener (Model DC-5202 ONLY).

1. Refer to the DIP switch settings in your receiver or the back of your opener and take notes on the chart to the upper right which switches are in the “On” or “Closed” positions. You must have at least 1 of the 10 switches closed.
2. Press the Radio Learn button twice. The light by the Digi-Code label will come on and stay on.
3. Press the numbers that represent the closed switches on the receiver or the garage door opener (i.e. if switches 2,4, and 6 are closed, enter 246. For switch position 10, use the 0 key).
4. Press the Radio Learn button once.
5. To test if you have properly programmed in the radio code, enter the factory set PIN (1-2-3-4). The receiver or opener should operate.

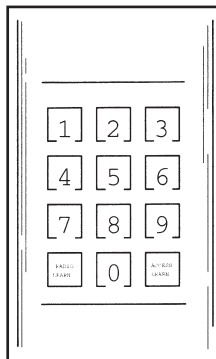


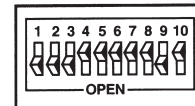
Figure 7

Section 5: Programming a new Personal Identification Number (PIN).

1. Press the Access Learn button twice. After doing this, the light by the Digi-Code label will come on and stay on.
2. Enter 1-2-3-4 (Factory Default), then your new 4-digit PIN or if you have already programmed your PIN - enter this number and then the new PIN you wish to change it to.
3. Press the Access Learn button once. The light by the Digi-Code label will turn off. The new PIN number has been accepted.

Digital Type Switches

If the flat side or the side you push down is toward the number, then the switch is ON.



Code = 1,2,3,9

Write the “ON” numbers of your RADIO CODE in the boxes shown below at this time. A “RADIO CODE” with **ALL** positions open (OFF) or **ALL** jumper wires clipped can **NOT** be used.

Switches

1	(Up to 10 numbers)								10

Section 6: Clear All Memory - Return to Factory Default Settings.

1. Press and hold both the Radio Learn and Access Learn buttons for approximately 10 seconds until the lights on the keypad go off. The unit now has a factory default PIN of 1234 **and ALL** radio codes have been erased.

Normal Operation

When the keypad is programmed properly, the garage door or gate should operate by pressing the four digits of your **PIN**. The door or gate will activate after pressing the fourth number and the indicator light will stay on for one second to show that the signal is being sent to the receiver. The keypad will blink on and off.

After each keystroke, the indicator will light.

After pressing any key, all the keys will light up.

Troubleshooting

The correct PIN must be entered within 20 keystrokes; otherwise the keypad will stop operation for 5 minutes. The user has 25 seconds between keystrokes to enter the correct code.

If you forget your **PIN**, you will have to reprogram your keypad again. (Refer to Section 3 for Stanley SecureCode openers or Section 4 for Digi-Code receivers or Stanley Digital openers.)

If the keypad lights go off after the first keystroke, the battery needs replacing.

Battery Replacement

The keypad uses a 9-volt battery.